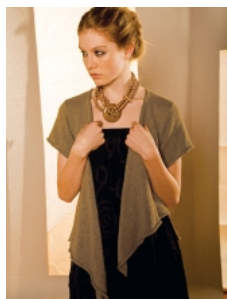




## FREE *pattern*



Made in:  
**Linsey®**

FIND THIS YARN

More Options:

[Women's Clothing booklet patterns](#)  
[Free Women's Clothing patterns](#)



### LEILANI

**Skill Level:** Easy

**Project Type:** Women's Clothing

Our asymmetrical short sleeve cardigan is a perfect spring and summer staple for your wardrobe.

Skill level: Easy

Shown in size Medium

#### Sizes

Directions are for women's size Small. Changes for sizes Medium and Large are in parentheses.

#### Finished Measurements

Bust (closed) – 38(42-46)''

Length – 25'' down center of back

**Note:** Due to the fit of this design, each size is very forgiving and will fit multiple sizes

#### Materials

10(11-12) Hanks [Berroco Linsey](#) (50 grs), #6557 Driftwood

#### Originally shown in:

13(15-16) Balls Berroco Linen Jeans (50 grs), #7405 New Khaki

Straight knitting needles, size 9 (5.50 mm) OR SIZE TO OBTAIN GAUGE

29'' Length circular knitting needle, size 9 (5.50 mm)

2 St markers

#### Gauge

19 sts = 4"; 26 rows = 4" in St st

TO SAVE TIME, TAKE TIME TO CHECK GAUGE

Back

With straight needles, cast on 165(175-185) sts.

**Row 1 (RS):** K80(85-90), SSK, place marker, k1, place marker, k2 tog, k80(85-90) – 163(173-183) sts. Purl 1 row. Working in St st, continue to dec 1 st each side of marker in this manner every 4th row 19(16-14) times, then every RS row 29(35-39) times. Work even until piece measures 25" from beg (measured down center of back), end on WS. Bind off. Measure down 8(8½-9)" from bound-off edge on each side and mark for beg of armholes.

Left Front

With straight needles, cast on 81(85-91) sts. Work 2 rows in St st, end on WS.

**Shape Neck: Next Row (RS):** K to last 2 sts, k2 tog – 80(84-90) sts. Continue to dec 1 st at neck edge every RS row 41(39-36) times more, then EVERY row 20(24-30) times – 19(21-23) sts. Work even until piece measures 17" from beg (measured straight down right edge), end on WS. Bind off. Measure down 8(8½-9)" from bound-off edge on straight side and mark for beg of left armhole.

Right Front

With straight needles, cast on 81(85-91) sts. Work even in St st for 2 rows, end on WS.

**Shape Neck: Next Row (RS):** K2 tog, k to end – 80(84-90) sts. Continue to dec 1 st at neck edge every RS row 55(59-65) times more, then every 4th row 6(4-1) times – 19(21-23) sts. Work even until piece measures 22" from beg (measured straight down left edge), end on WS. Bind off. Measure down 8(8½-9)" from bound-off edge on straight side and mark for beg of right armhole.

Sleeves

With straight needles, cast on 66(70-76) sts. Work even in St st for 1", end on WS.

**Inc Row (RS):** K1, M1k, k to last st, M1k, k1 – 68(72-78) sts. Rep this inc every 1" 4 times more – 76(80-86) sts. Work even until sleeve measures 6" from beg, end on WS. Bind off.

Finishing

Sew shoulder seams. Sew on sleeves between markers. Sew side and sleeve seams.

